

DSC1000-1

High Performance Dual Stage Power Line Filter

DSC1000-1 16A CHASSIS MOUNT FILTER

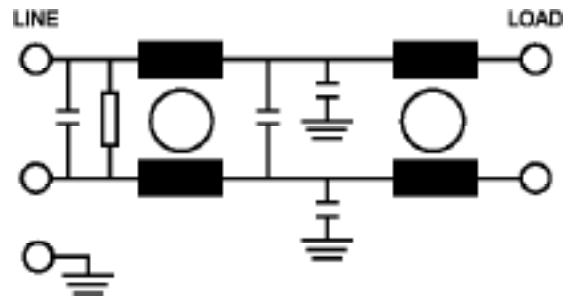
ROHS COMPLIANT

SPECIFICATIONS

Operating Freq.	: 50/60Hz
Usable Freq.	: DC - 400Hz
Max. Operating Voltage	: 300V +10%
Rated Current	: 16A
Ambient Temperature	: -25 to 40C
Climatic Category	: 25/100/21
Hipot Rating (L-G)	: 2700VDC
Terminals (-T)	: QD: 0.25 Tabs
Safety Approvals	: cURus, EN60939
Typ. Weight, LBS (KG)	: 0.8 (0.4)



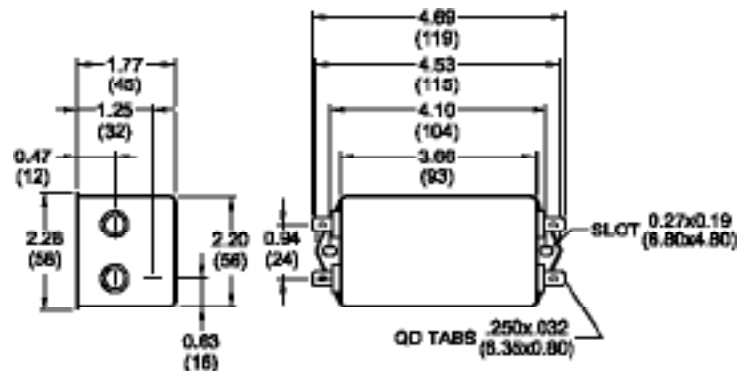
SCHEMATIC



TYPICAL INSERTION LOSS, dB (50/50ohm)

FREQ(MHz)	.15	.5	1.0	10	30
CM(dB)	42	65	70	55	50
DM(dB)	36	60	65	70	70

MECHANICAL



TYPICAL TOLERANCE: +/-0.02 (0.50)

PART NUMBER/ ORDERING

DSC1000-1	-Y (Ycap) (nF)	-T	LK, mA	
			120V/60Hz	250V/60Hz
	0	QD	0	0
	.47		0.04	0.08
	1		0.09	0.18
	2.2		0.2	0.4
	4.7		0.4	0.8
	10		0.9	1.8

Reference purposes only.
Specifications are subject to change.
Consult factory to verify specifications.

www.radiuspower.com
www.astrodyne.com

Email: Emifiltercs@astrodyne.com